



# CHAMPAGNE DIAMOND CERTIFICATE

REPORT ISSUED BY

E.G.L.

South Africa

## Laboratory report

Certificate N° SA 0

This examination has been carried out by graduate gemologists and may be repeated at any time.

**DESCRIPTION:** NATURAL DIAMOND

**WEIGHT:** 1.0700 Cts

**SHAPE AND CUT:** ROUND BRILLIANT

**CLARITY GRADE:** SI2  
(10 x Magnification)

**COLOUR GRADE:** MEDIUM CHAMPAIGN - C3  
(Colour grade based on master comparison stones.)

**MEASUREMENTS:** 4.63 mm X 4.62 mm X 2.80 mm

**PROPORTIONS:** VERY GOOD

Depth %: 58.7 %

Table diameter %: 63.8 %

Crown height %: 12 %

Pavilion depth %: 44.2 %

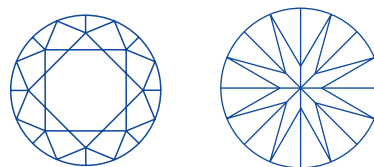
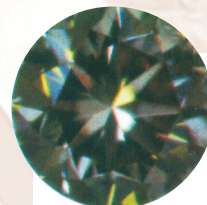
Girdle thickness: (1.8 - 2.6)

**SYMMETRY:** GOOD

**POLISH:** GOOD

**FLUORESCENCE:** NONE

**COMMENTS:** SAMPLE



Laboratory Director

DATE: 20 April 2009

**ORIGINAL** This report expresses an opinion at the time of inspection of the stone not a guarantee, valuation or appraisal. No representation or warranties as to the accuracy are made. It is a term of the agreement under which E.G.L. expresses an opinion that E.G.L. is expressly held harmless by customers including, but without limitation for any claims or actions that may arise in connection with the preparation of this certificate or action based upon the customer's use of the certificate.



# CLARITY GRADING SCALE

(Using a corrected 10x loupe)

Every diamond is unique, with its own series of internal and external characteristics.

The skilled grader takes into consideration the size, nature, location and number of these characteristics to assign each stone its proper grade.

IF	VVS1	VVS2	VS1	VS2	
Internally Flawless	Very, Very Slight Inclusions				
Slight Inclusions			Very Slight Inclusions		
SI1	SI2	SI3	I1	I2	I3
Slight Inclusions			Included		

**The internally flawless grade (IF)** describes diamonds which have no internal characteristics observable, but which have minor surface blemishes that do not penetrate the stone.

**The very, very slight inclusions grade (VVS1 & VVS2)** are used to describe diamonds which have very, very small inclusions and difficult for a skilled observer to see.

**The very slight inclusions grade (VS1 & VS2)** are used to describe stones with very small inclusions.

**The slight inclusions grade (SI1 & SI2 & SI3)** are used to describe stones with small inclusions which are usually obvious when viewed by a skilled observer.

**The Included grade (I1 & I2 & I3)** are used to describe stones with medium or large inclusions which are usually obvious to a skilled observer, with the unaided eye, under favourable lighting conditions.

# C1-C7 COLOUR SCALE



C1

Light Champagne



C2



C3

Medium Champagne



C4



C5

Dark Champagne



C6



C7

Fancy Cognac

# CHAMPAGNE DIAMOND CERTIFICATE



# E.G.L.

Laboratory Sample set matched from Argyle diamond master set